

KZN Racing Pigeon Combine

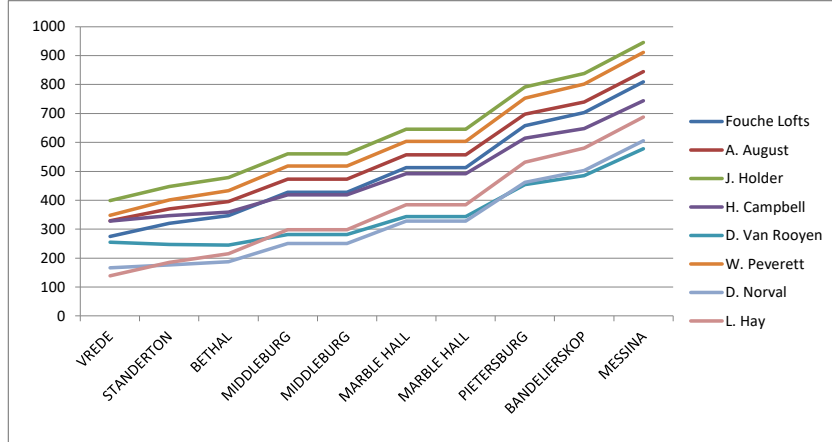
Race Programme 2017

Week	Race No	Basket Day	Basket Date	Liberate Date	Liberate Time	Race Type	North Route Liberation Point	West Route Liberation Point	Race Distance							
									Fouche Lofts	A. August	J. Holder	H. Campbell	D. Van Rooyen	W. Peverett	D. Norval	L. Hay
1	1	THURSDAY	25/05/2017	27/05/2017	08H00	OPEN	VREDE		275	329	399	328	255	348	167	139
	2				08H00	OPEN		PAUL ROUX	284	344	369	409	385	296	284	181
2	3	THURSDAY	01/06/2017	03/06/2017	08H00	OPEN	STANDERTON		320	370	448	347	247	401	176	185
	4				08H00	OPEN		SENEKAL	312	373	389	443	419	313	318	215
3	5	THURSDAY	08/06/2017	10/06/2017	08H00	OPEN	BETHAL		347	395	478	359	245	433	187	215
	6				08H00	OPEN		WINBURG	356	416	417	499	481	336	380	272
4	7	THURSDAY	15/06/2017	17/06/2017	EARLY AM	OPEN	MIDDLEBURG		428	473	560	419	281	518	250	298
	8				EARLY AM	OPEN		BLOEMFONTEIN	419	475	448	582	584	364	481	362
5	9	THURSDAY	22/06/2017	24/06/2017	08H00	2016 Rung	VREDE YRL		275	329	399	328	255	348	167	139
	10				08H00	2016 Rung		PAUL ROUX YRL	284	344	369	409	385	296	284	181
6	11	THURSDAY	29/06/2017	01/07/2017	EARLY AM	OPEN	MIDDLEBURG		428	473	560	419	281	518	250	298
	12				EARLY AM	OPEN		BLOEMFONTEIN	419	475	448	582	584	364	481	362
7	13	THURSDAY	06/07/2017	08/07/2017	08H00	2016 Rung	STANDERTON YRL		320	370	448	347	247	401	176	185
	14				08H00	2016 Rung		SENEKAL YRL	312	373	389	443	419	313	318	215
8	15	THURSDAY	13/07/2017	15/07/2017	EARLY AM	OPEN	MARBLE HALL		513	557	646	492	343	604	328	384
	16				EARLY AM	OPEN		DEALESVILLE	465	523	506	618	602	422	501	392
9	17	THURSDAY	20/07/2017	22/07/2017	08H00	2016 Rung	BETHAL YRL		347	395	478	359	245	433	187	215
	18				08H00	2016 Rung		WINBURG YRL	356	416	417	499	481	336	380	272
10	19	THURSDAY	27/07/2017	29/07/2017	EARLY AM	OPEN	MARBLE HALL		513	557	646	492	343	604	328	384
	20				EARLY AM	OPEN		PETRUSBURG	542	594	548	714	722	466	619	498
11	21	THURSDAY	03/08/2017	05/08/2017	EARLY AM	2016 Rung	MIDDLEBURG YRL		428	473	560	419	281	518	250	298
	22				EARLY AM	2016 Rung		BLOEMFONTEIN YRL	419	475	448	582	584	364	481	362
12	23	THURSDAY	10/08/2017	12/08/2017	EARLY AM	OPEN	PIETERSBURG		658	698	792	614	454	753	462	532
	24				EARLY AM	OPEN		KIMBERLY	560	617	590	717	701	506	601	492
13	25	THURSDAY	17/08/2017	19/08/2017	EARLY AM	2016 Rung	MIDDLEBURG YRL		428	473	560	419	281	518	250	298
	26				EARLY AM	2016 Rung		BLOEMFONTEIN YRL	419	475	448	582	584	364	481	362
14	27	THURSDAY	24/08/2017	26/08/2017	EARLY AM	OPEN	BANDELIERSKOP (PUTRIE MEMORIAL RACE)		703	740	838	648	485	802	503	580
	28				EARLY AM	OPEN		DOUGLAS	650	704	666	814	805	584	703	591
15	29	THURSDAY	31/08/2017	02/09/2017	EARLY AM	2016 Rung	MARBLE HALL YRL		513	557	646	492	343	604	328	384
	30				EARLY AM	2016 Rung		PETRUSBURG YRL	542	594	548	714	722	466	619	498
16	31	THURSDAY	07/09/2017	09/09/2017	EARLY AM	OPEN	MESSINA		809	845	945	744	578	911	606	688
	32				EARLY AM	OPEN		GROBLERSHOOP	824	878	837	986	970	755	871	762
17	33	THURSDAY	14/09/2017	16/09/2017	EARLY AM	2016 Rung	MARBLE HALL YRL		513	557	646	492	343	604	328	384
	34				EARLY AM	2016 Rung		KIMBERLY YRL	560	617	590	717	701	506	601	492

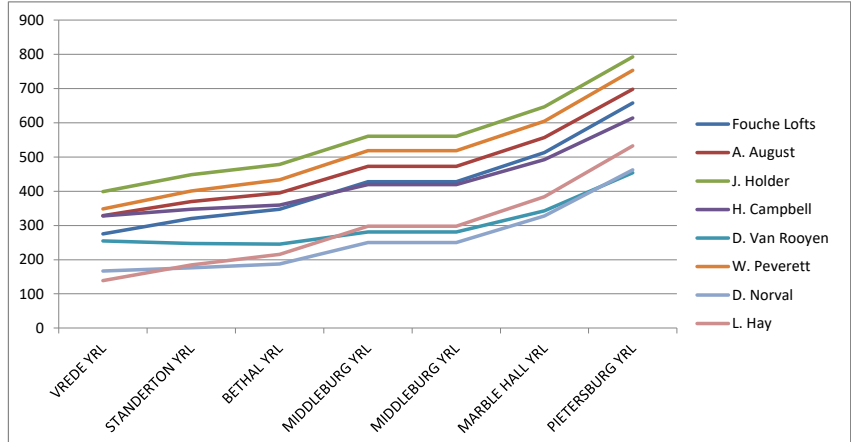
THE FIRST 3 WEEKS OF OLD BIRDS AND FIRST 3 WEEKS OF YEARLING RACES DO NOT COUNT FOR COMBINE POINTS

Combine Sale:	West Race:	30 - Petrusburg	North Race:	33 - Marble Hall
Alliance Sale:	1st Leg:	26 - Bloemfontein	2nd leg & nomination race:	29 - Marble Hall
Durban North Sale:	West race:	30 - Petrusburg	North race:	33 - Marble Hall
Pinetown Sale:	North race:	33 - Marble Hall		

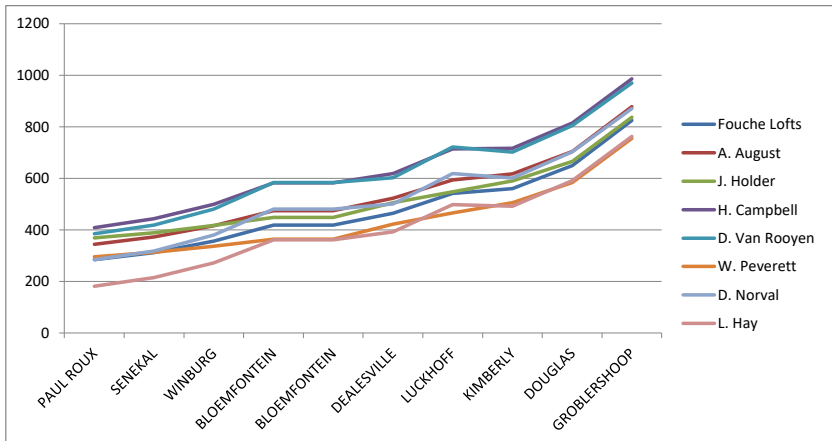
	PMB	DBN	NPS	NRB	PONG	KOK	VRY	LAD
Liberation Point	Fouche Lofts	A. August	J. Holder	H. Campbell	D. Van Rooyen	W. Peverett	D. Norval	L. Hay
VREDE	275	329	399	328	255	348	167	139
STANDERTON	320	370	448	347	247	401	176	185
BETHAL	347	395	478	359	245	433	187	215
MIDDLEBURG	428	473	560	419	281	518	250	298
MIDDLEBURG YRL	428	473	560	419	281	518	250	298
MARBLE HALL	513	557	646	492	343	604	328	384
MARBLE HALL YRL	513	557	646	492	343	604	328	384
PIETERSBURG	658	698	792	614	454	753	462	532
PIETERSBURG YRL	658	698	792	614	454	753	462	532
BANDELIERSKOP	703	740	838	648	485	802	503	580
BANDELIERSKOP YRL	703	740	838	648	485	802	503	580
MESSINA	809	845	945	744	578	911	606	688
MESSINA YRL	809	845	945	744	578	911	606	688



	PMB	DBN	NPS	NRB	PONG	KOK	VRY	LAD
Liberation Point	Fouche Lofts	A. August	J. Holder	H. Campbell	D. Van Rooyen	W. Peverett	D. Norval	L. Hay
VREDE YRL	275	329	399	328	255	348	167	139
STANDERTON YRL	320	370	448	347	247	401	176	185
BETHAL YRL	347	395	478	359	245	433	187	215
MIDDLEBURG YRL	428	473	560	419	281	518	250	298
MIDDLEBURG YRL	428	473	560	419	281	518	250	298
MARBLE HALL YRL	513	557	646	492	343	604	328	384
MARBLE HALL YRL	513	557	646	492	343	604	328	384
PIETERSBURG YRL	658	698	792	614	454	753	462	532
PIETERSBURG YRL	658	698	792	614	454	753	462	532
PIETERSBURG YRL	=	=	=	=	=	=	=	=
PIETERSBURG YRL	=	=	=	=	=	=	=	=
PIETERSBURG YRL	=	=	=	=	=	=	=	=



	PMB	DBN	NPS	NRB	PONG	KOK	VRY	LAD
Liberation Point	Fouche Lofts	A. August	J. Holder	H. Campbell	D. Van Rooyen	W. Peverett	D. Norval	L. Hay
PAUL ROUX	284	344	369	409	385	296	284	181
SENEKAL	312	373	389	443	419	313	318	215
WINBURG	356	416	417	499	481	336	380	272
BLOEMFONTEIN	419	475	448	582	584	364	481	362
BLOEMFONTEIN YRL	419	475	448	582	584	364	481	362
BLOEMFONTEIN YRL	419	475	448	582	584	364	481	362
DEALESVILLE	465	523	506	618	602	422	501	392
LUCKHOFF	542	594	548	714	722	466	619	498
LUCKHOFF YRL	542	594	548	714	722	466	619	498
KIMBERLY	560	617	590	717	701	506	601	492
KIMBERLY YRL	560	617	590	717	701	506	601	492
DOUGLAS	650	704	666	814	805	584	703	591
DOUGLAS YRL	650	704	666	814	805	584	703	591
GROBLERSHOOP	824	878	837	986	970	755	871	762
GROBLERSHOOP YRL	824	878	837	986	970	755	871	762



	PMB	DBN	NPS	NRB	PONG	KOK	VRY	LAD
Liberation Point	Fouche Lofts	A. August	J. Holder	H. Campbell	D. Van Rooyen	W. Peverett	D. Norval	L. Hay
PAUL ROUX YRL	284	344	369	409	385	296	284	181
SENEKAL YRL	312	373	389	443	419	313	318	215
WINBURG YRL	356	416	417	499	481	336	380	272
BLOEMFONTEIN YRL	419	475	448	582	584	364	481	362
BLOEMFONTEIN YRL	419	475	448	582	584	364	481	362
BLOEMFONTEIN YRL	419	475	448	582	584	364	481	362
LUCKHOFF YRL	542	594	548	714	722	466	619	498
LUCKHOFF YRL	542	594	548	714	722	466	619	498
KIMBERLY YRL	560	617	590	717	701	506	601	492
KIMBERLY YRL	560	617	590	717	701	506	601	492
KIMBERLY YRL	=	=	=	=	=	=	=	=
KIMBERLY YRL	=	=	=	=	=	=	=	=
KIMBERLY YRL	=	=	=	=	=	=	=	=

